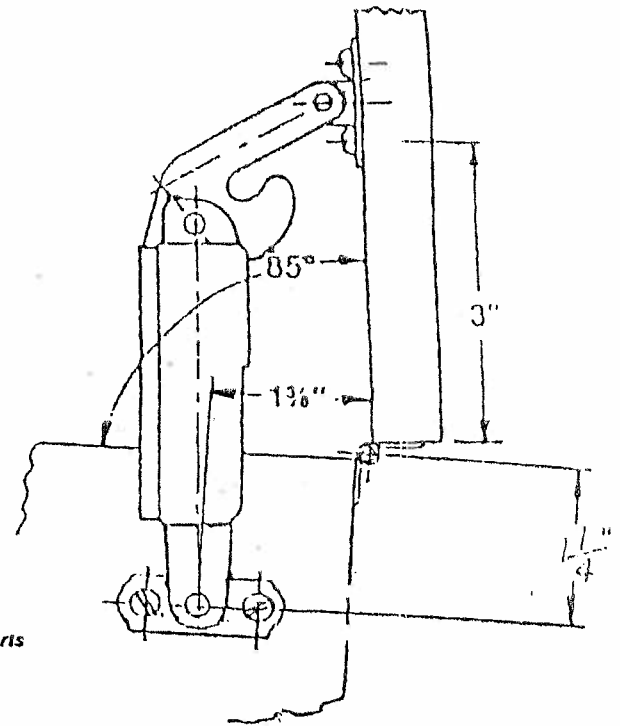


SERIES 700

Assembly of 702 Series

1. Place the lid support on either right side panel or left side panel depending on location of "U" bracket on the housing. Using dimensions on installation diagram, fasten "U" bracket to side panel with two #6 sheet metal screws.
(Notice the $1\frac{3}{8}$ " dimension from center of hinge pin to pivot point of "U" bracket is critical.)
2. Lay the lid support up against the under side of the lid so that the first screw hole is approximately 3 inches from back edge of lid. Fasten with 2 #6 sheet metal screws as before.



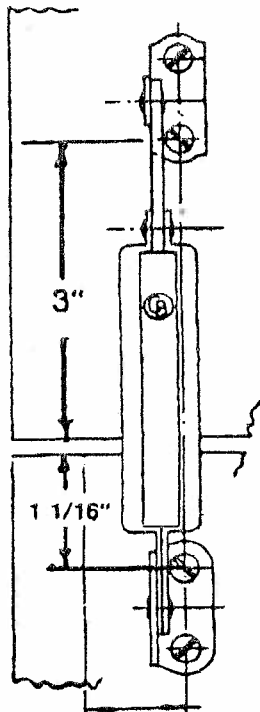
Carlson Capitol Mfg. Inc.

Manufacturers of Tools, Dies, Metal Stampings & Lid Supports
2319 23rd Avenue • P.O. Box 6165
Rockford, Illinois 61125

815-398-3110

SPRING COLOR	Inch Pounds	
	Low Limit	High Limit
WHITE	110	140
ORANGE	95	125
YELLOW	65	95
BLACK	55	65
MAROON	45	55
GREEN	40	45
BLUE	35	40
GREY	20	35

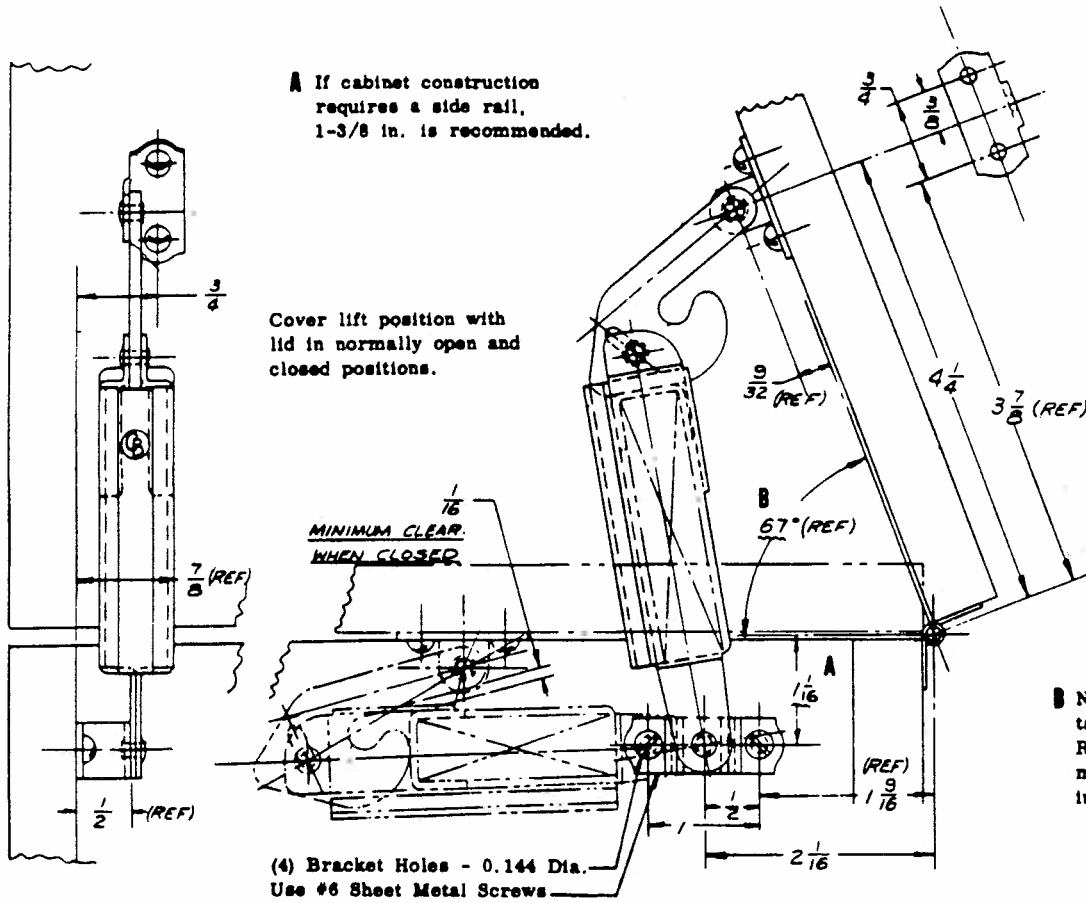
To find Inch Pounds, multiply half the distance from front to back times the weight of the lid.



Assembly of 703 Series

1. Place bottom bracket so that top screw hole is $1\frac{1}{16}$ " down from the top of back panel. Fasten with #6 sheet metal screw. Secure second screw as well.
2. Open lid to approximately 90 degrees and place lid support against the under side of lid with cover bracket flat against this surface. Secure with two screws as before. The distance from the back edge of the lid to the first screw hole should be 3 inches.

Do not try to operate by hand.



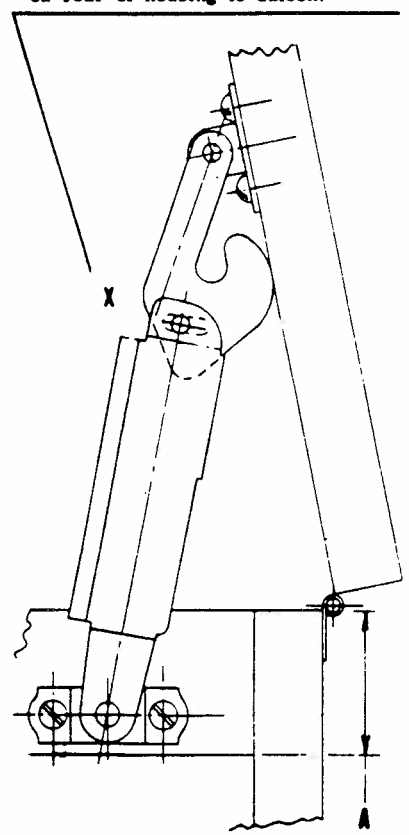
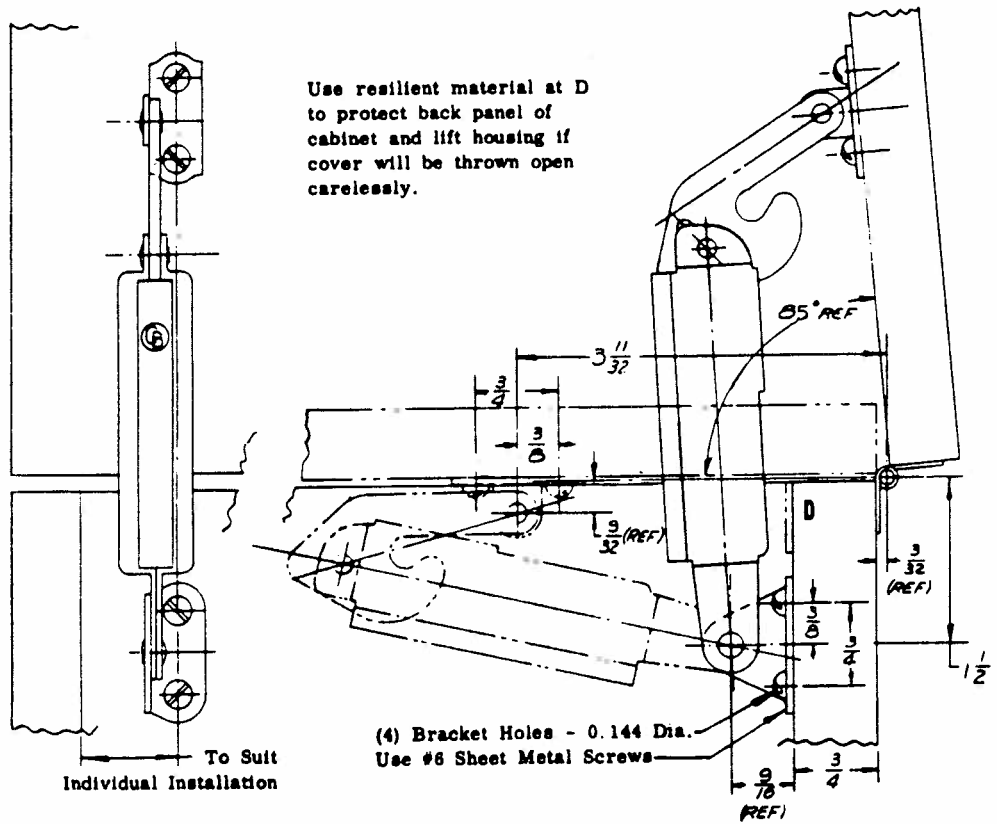
WHEN ORDERING Cover Lift, specify Part No. and Color of spring required.
Example: 702-L Blue

For non-standard installations, consult Engineering Dept.

B NOTE: All locating dimensions taken from centerline of hinge. Relative position of brackets must be maintained if change in opening angle is desired.

702-L LEFT HAND MOUNTING SHOWN
702-R Right Hand Mounting is Opposite

NOTE: Assemblers and Servicemen Lids may be locked open during installation of changer by applying light pressure at point X. Press on rear of housing to unlock.



703-L LEFT HAND MOUNTING SHOWN
703-R Right Hand Mounting is Opposite